



JW

S H E A R S

EXPRESS YOUR IDEAS!



At JW, we believe that ideas are everything!

Because we are an independent company, we have the freedom to make sure that great ideas live on to become ultimate hair-cutting tools, as shear enthusiasts notice.

When you exercise your freedom to just get up and go, you need a companion that is both flexible and reliable. Shears that simply look great against any backdrop.

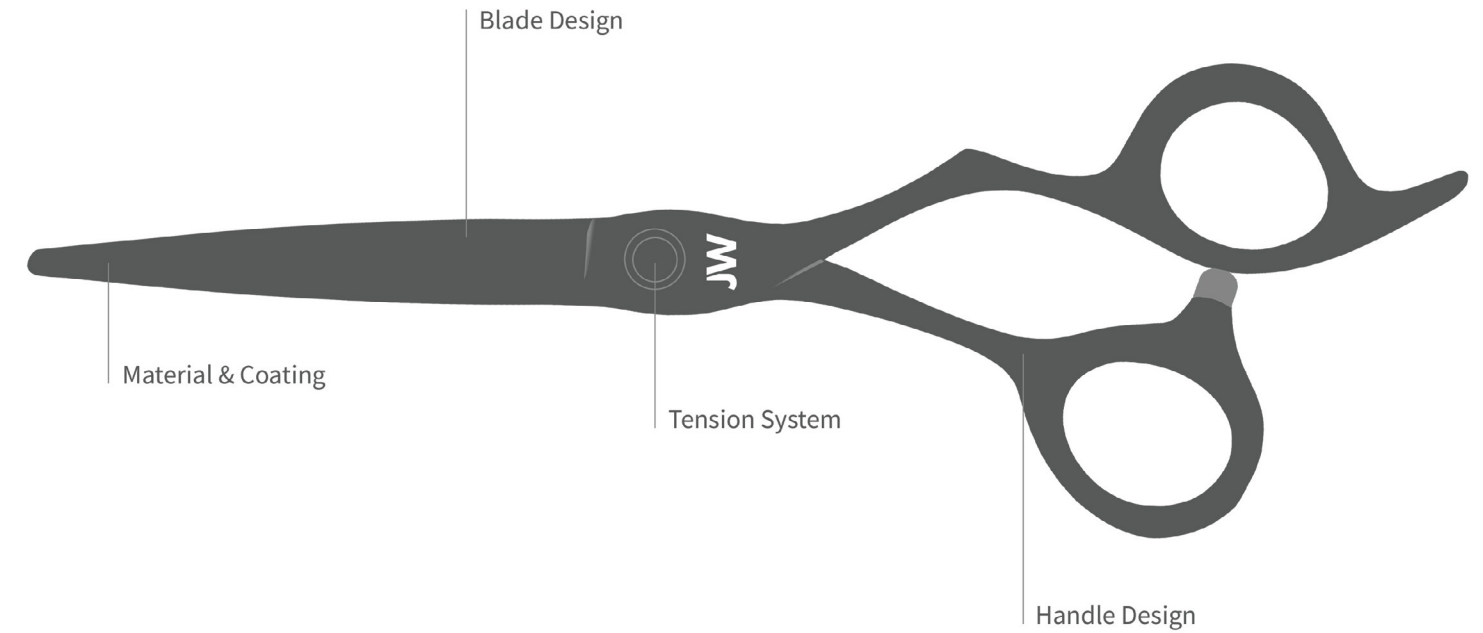
TABLE OF CONTENTS

- | 05 DB2 Series
- 06 | 07 Q Series / Z Series / X Series
- 08 | 09 CSL Series / CBK Series
- 10 | 11 RGS Series
- 12 | 13 XO Series / M6 Series / Blu Series
- 14 | 15 M2 Series / S4 Series
- 16 | 17 S2 Series
- 18 | 19 C2 Series / C3 Series
- 20 | 21 C5 Series / C6 Series
- 22 | 23 TS7 Series / TS14 Series / TS40 Series / TSB40 Series
- 24 | 25 Craft Series / Briskee Series
- 26 | 27 K5 Series / Service & Warranty



SCAN ME

A digital version of this catalog is available for view, print and / or save at [JWShears.com](https://www.JWShears.com)



HANDLE DESIGN

Offset Handle: A design for stylists who use the ring finger to hold the shear. The shorter thumb handle reduces over-extension of the thumb. Keeps elbow in a downward position versus an opposing grip shear that forces the elbow into a raised, stressful position.

Straight Handle: The oldest design, ideal for stylists who cut with their middle finger and thumb. This design is also ideal for lefties who use right handed shears.

Swivel Thumb: Swivel thumb provides an added flexibility, increased comfort and control while allowing you to cut with your elbow down in every cutting position.

MATERIAL & COATING

440C Japan: Premium High-Carbon Japanese Stainless Steel is a product of experience and dedication in manufacturing a family of ultimate cutting tools. This alloy not only ensures a longer lasting edge but also a much smoother and firmer cutting action.

ZA18 Japan: A special high-grade cobalt stainless steel developed to outperform other high-grade steel by adding a bit more Carbon, Chromium, Cobalt and Molybdenum. By doing that the rust resistance is improved as well as the blades are less likely to chip. The cutting edge is clad with 34 layers on each side which makes it 69 layers in total.

Special Coating: Some models are added a special coating to add an extra layer of protection, durability and a little personal touch. Titanium coating will have a more shiny finish while teflon coated shears will have a matter finish.

TENSION SYSTEM

Counter-Sunk Tension Control: Our original anti-loosening design ensures your shears open and close smoothly. A sealed ring of ball bearings stabilizes the pivot action ensuring that your shears are not loose and your edge will stay sharper longer.

Knob Tension Control: Tension adjustable screw is a sophisticated tool by its own. It sets, controls and stabilizes tension with exact accuracy.

EDGE DESIGN

Convex shear blade design is extremely powerful and helps a smooth and sharp cutting action. As the outer face of the blade is curved, this blade type is especially suitable for slide cutting and allows for more advanced cutting techniques. The Convex edge allows for razor sharpness and is hollow ground and triple honed for super smooth runs, low friction and sound. Perfect for all cutting styles including dry, point, slide and wet.



simplicity
is the
ultimate
sophistication



NEW
DB2 SERIES

OFFSET HANDLE 	ZA18 JAPAN 	CONVEX EDGE
COBALT BASE Co	POLYMER LINING 	

- Permanent Finger Rest
- Adjustable Tension Control
- Screw in Bumper
- Polymer Pivot Lining
- Cobalt Alloy
- Lifetime Warranty
- 5.25" / 5.75" / 6.25"
- \$599

Q SERIES



Permanent Finger Rest
 Counter-Sunk Tension Control
 Screw in Bumper
 Lifetime Warranty
 5.75" / 6.25"
 \$379



Z SERIES



Permanent Finger Rest
 Low-Profile Tension Control
 Screw in Bumper
 Lifetime Warranty
 5.75" / 6.25"
 \$429



X SERIES



Permanent Finger Rest
 Knob Tension Control
 Screw in Bumper
 Engraved Handle Design
 Lifetime Warranty
 5.25" / 5.75" / 6.25" / 7.0"
 \$289



CBK SERIES

OFFSET HANDLE 	440C JAPAN 	CONVEX EDGE
BLACK TEFLON COATING 	BARBER STYLE AVAILABLE 	MATCHING THINNER AVAILABLE

Permanent Finger Rest
Counter-Sunk Tension Control
Screw in Bumper
Lifetime Warranty
5.25 / 5.75" / 6.25" / 6.75"
\$229



CSL SERIES

OFFSET HANDLE 	440C JAPAN 	CONVEX EDGE
BARBER STYLE AVAILABLE 	MATCHING THINNER AVAILABLE 	

Permanent Finger Rest
Counter-Sunk Tension Control
Screw in Bumper
Lifetime Warranty
5.25 / 5.75" / 6.25" / 6.75"
\$229



CBK40 SERIES

OFFSET HANDLE 	440C JAPAN
BLEND CUTTING 18% CUT RATIO 	BLACK TEFLON COATING

Permanent Finger Rest
Low-Profile Tension Control
Screw in Bumper
40 Tooth
Lifetime Warranty
6.25"
\$169



CSL40 SERIES

OFFSET HANDLE 	440C JAPAN
BLEND CUTTING 18% CUT RATIO 	BLACK TEFLON COATING

Permanent Finger Rest
Low-Profile Tension Control
Screw in Bumper
40 Tooth
Lifetime Warranty
6.25"
\$169





NEW
RGS SERIES



OFFSET
HANDLE



440C
JAPAN



CONVEX
EDGE



ROSE GOLD
TITANIUM

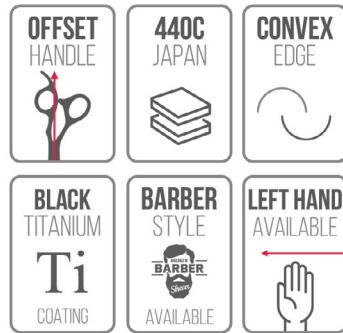
Ti

COATING

Permanent Finger Rest
Counter-Sunk Tension Control
Screw in Bumper
Lifetime Warranty
5.75" / 6.25"
\$259

LET YOUR
HAIR
DO THE
TALKING

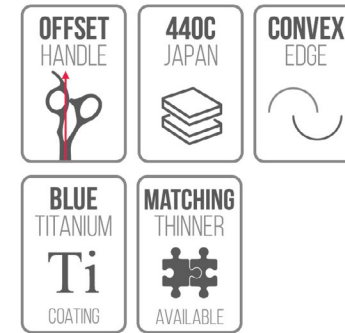
XO SERIES



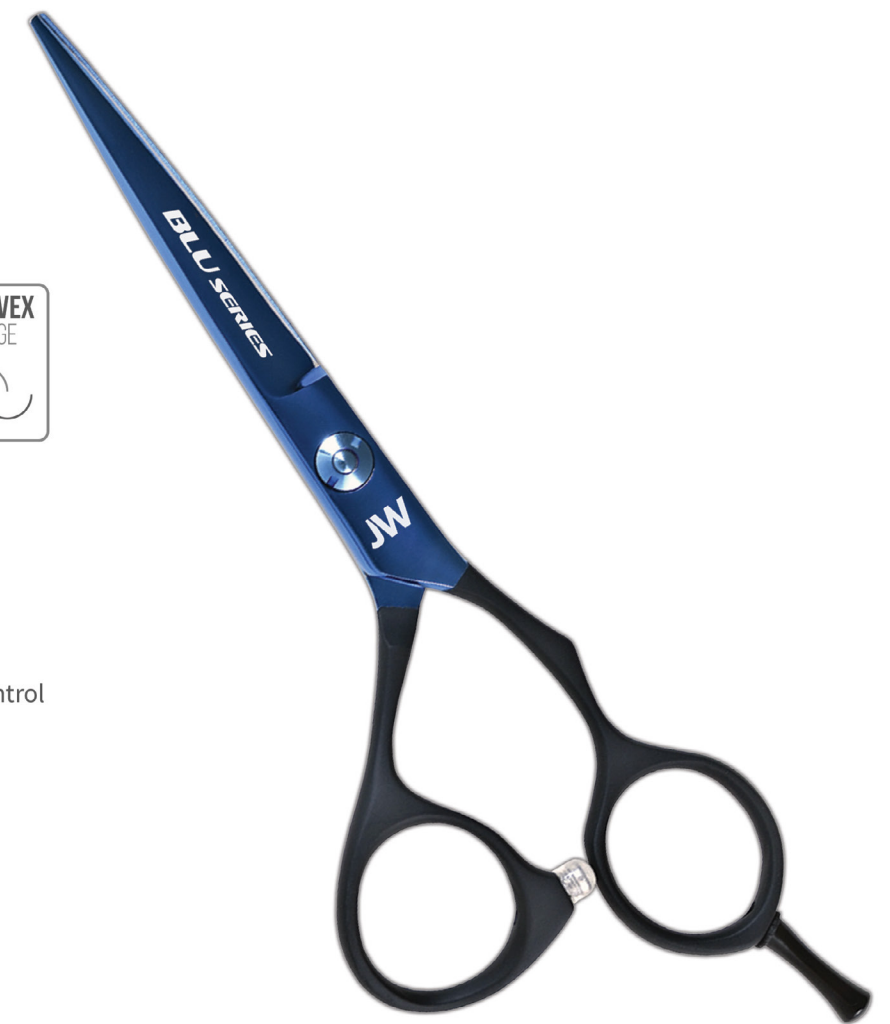
Removable Finger Rest
Counter-Sunk Tension Control
Screw in Bumper
Lifetime Warranty
5.0 / 5.5" / 6.0" / 7.0" (Right Hand)
5.0" / 5.5" (Left Hand)
\$229



BLU SERIES



Removable Finger Rest
Counter-Sunk Tension Control
Screw in Bumper
Rubber Coated Handle
Lifetime Warranty
5.25" / 5.75" / 6.25"
\$229



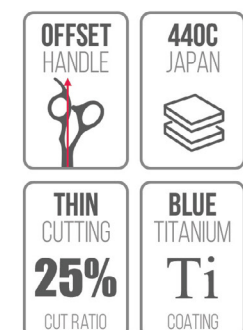
M6 SERIES



Permanent Finger Rest
Counter-Sunk Tension Control
Screw in Bumper
Lifetime Warranty
5.25 / 5.75"
\$229



TS-BLU30 SERIES



Permanent Finger Rest
Counter-Sunk Tension Control
Screw in Bumper
Rubber Coated Handle
30 Tooth
Lifetime Warranty
6.0"
\$169





Fueled by
Passion

M2 SERIES



OFFSET
HANDLE



440C
JAPAN



CONVEX
EDGE

Removable Finger Rest
Counter-Sunk Tension Control
Screw in Bumper
Lifetime Warranty
5.0 / 5.5" / 6.0"
\$199



S4 SERIES



STRAIGHT
HANDLE



440C
JAPAN

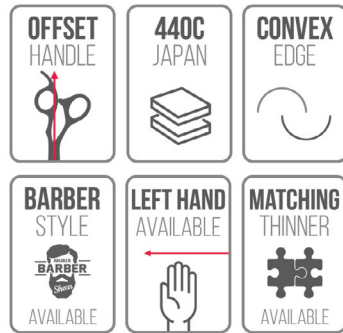


CONVEX
EDGE

Removable Finger Rest
Counter-Sunk Tension Control
Screw in Bumper
Lifetime Warranty
5.0" / 5.5" / 6.0"
\$129



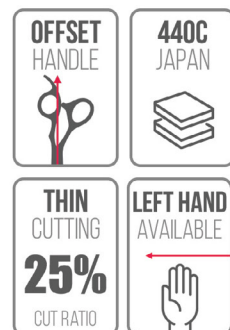
S2 SERIES



Removable Finger Rest
 Counter-Sunk Tension Control
 Screw in Bumper
 Lifetime Warranty
 5.0 / 5.5" / 6.0" / 7.0" (Right Hand)
 5.5" / 6.0" (Left Hand)
 \$149



S2-27 SERIES



Removable Finger Rest
 Counter-Sunk Tension Control
 Screw in Bumper
 27 Tooth
 Lifetime Warranty
 6.0"
 \$169



C2 SERIES



Permanent Finger Rest
Counter-Sunk Tension Control
Screw in Bumper
Lifetime Warranty
5.0 / 5.5" / 6.0"
\$229



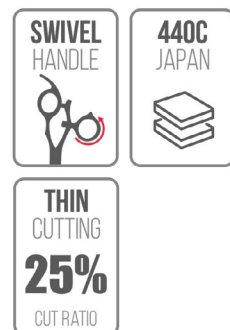
C3 SERIES



Permanent Finger Rest
Knob Tension Control
Screw in Bumper
Lifetime Warranty
5.5" / 6.0" (Right Hand)
5.5" / 6.0" (Left Hand)
\$229



C2-27 SERIES



Permanent Finger Rest
Counter-Sunk Tension Control
Screw in Bumper
27 Tooth
Lifetime Warranty
6.0"
\$169



C3-40 SERIES



Permanent Finger Rest
Knob Tension Control
Screw in Bumper
40 Tooth
Lifetime Warranty
6.0"
\$169





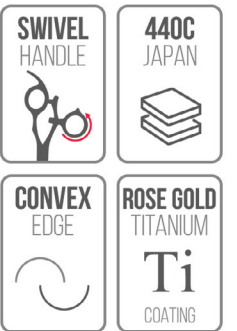
C5 SERIES



Permanent Finger Rest
 Knob Tension Control
 Screw in Bumper
 Full Swivel Thumb
 Engraved Handle Design
 Lifetime Warranty
 5.25" / 5.75" / 6.25"
 \$329



NEW C6 SERIES



Permanent Finger Rest
 Counter-Sunk Tension Control
 Screw in Bumper
 Lifetime Warranty
 5.25" / 5.75" / 6.25"
 \$289



TS40 SERIES

OFFSET HANDLE 	440C JAPAN 
BLEND CUTTING 18% CUT RATIO	

Permanent Finger Rest
Counter-Sunk Tension Control
Screw in Bumper
40 Tooth
Lifetime Warranty
6.0"
\$169



TS14 SERIES

OFFSET HANDLE 	440C JAPAN 
CHANNEL CUTTING 50% CUT RATIO	

Permanent Finger Rest
Counter-Sunk Tension Control
Screw in Bumper
14 Tooth
Lifetime Warranty
6.0"
\$169




TSB40 SERIES

OFFSET HANDLE 	440C JAPAN 
BLEND CUTTING 18% CUT RATIO	BLACK TEFLON COATING 

Permanent Finger Rest
Counter-Sunk Tension Control
Screw in Bumper
40 Tooth
Lifetime Warranty
6.0"
\$169



TS7 SERIES

OFFSET HANDLE 	440C JAPAN 
TEXTURE CUTTING 75% CUT RATIO	

Permanent Finger Rest
Counter-Sunk Tension Control
Screw in Bumper
7 Tooth
Lifetime Warranty
6.0"
\$169





CRAFT PRO

Black Powder Coating
Japanese stainless Steel
Offset Handle Design
Convex Edge Blade
5.5"



JW ION

Japanese Stainless Alloy
Offset Handle Design
Convex Edge Blade
5.5"



CRAFT X

Soft Cutting
Ergonomic Handle
Lightweight
Premium Steel
Lifetime Warranty
5.5"/6.0"



CRAFT X

Soft Cutting
Ergonomic Handle
Lightweight
Premium Steel
Lifetime Warranty
27 Tooth (25% Cut Ratio)



CRAFT R

Japanese Stainless Steel
Offset Handle Design
Convex Edge Blade
5.25" / 5.75"



CRAFT CT

Japanese Stainless Steel
Offset Handle Design
40 Tooth
18% Cut Ratio



CRAFT RAZOR

11 Free Blades
Long-Life Blades
Swivel Finger Ring



CRAFT BLUE RAZOR

11 Free Blades
Long-Life Blades
Blue Finish

EXCLUSIVELY AT COSMO PROF

Briskee



BRISKEE PLUS

Black Powder Coating
Japanese Stainless Steel
Convex Edge Blade
Offset Handle Design
40 Tooth Blender (18% Cut Ratio)
5.5"



BRISKEE COMBO

Japanese Stainless Steel
Convex Edge Blade
Offset Handle Design
40 Tooth Blender (18% Cut Ratio)
5.0" / 5.5" / 6.0"

Available in Single Shear or Combo Set

EXCLUSIVELY AT SALONCENTRIC

K5



K5 SWIVEL SERIES

Japanese Stainless Steel
Convex Edge Blade
Swivel Thumb Handle
40 Tooth Blender (18% Cut Ratio)
5.25" / 5.75"



BRISKEE SWIVEL

Japanese Stainless Steel
Convex Edge Blade
Swivel Thumb Handle
40 Tooth Blender (18% Cut Ratio)
5.5"



Find your favorite Briskee model at any
Cosmo Prof Store!



K5 SERIES

Japanese Stainless Steel
Convex Edge Blade
Offset Handle Design
40 Tooth Blender (18% Cut Ratio)
5.25" / 5.75" / 6.25"
Available in Single Shear or Combo Set

Find your favorite K5 model at any
Salon Centric Store!





C900 SHEAR CASE

Hold up to 6 shears
Large Zipper Keeps the Case Closed
Textured Material is Durable and Easy to Clean
Measures 5.75" x 8.75" Closed
\$39

6 PCS CARBON COMB SET

Sophisticated Combs Combined in an Elegant Case
Includes all Specially Designed Artist Combs
Flexibility and Strength for Fine Detailing
Thin Design Allows for a Close Taper
Counter-Sunk Tension Control
Heat Resistance Carbon Finish
6 Combs & Case
\$29



C400 SHEAR CASE

Zipper Closure
4 Pockets
Hold shears & Combs up to 7"
Leatherette Finish
Available in White or Black
\$19



STYLING RAZOR

Long Life Blades
Ergonomic Design
5 Extra Free Blades
Available in:
Swivel: RBK100
Silver: RBK110
\$29



JW FLAIROSOL SPRAY

Propellant-Free
Continuous Spray
Fine Mist
Upside-Down Spray
\$15



SERVICE & WARRANTY

JW SHEAR WARRANTY

By investing in a JW shear you have made a commitment to top professional performance and extraordinary engineering. To guarantee these superior qualities, use only the technician who fashioned your shears to service it. We have the custom tools and trained professionals who will expertly sharpen, recondition and repair your shears with the context of its advanced design.

JW GENUINE PARTS

Once you have experienced JW quality, you will never wish to compromise it. That is why we encourage you always to service your JW shears with Genuine JW Parts. As part of our commitment to our loyal customers and lifetime warranty, we offer free parts for our valued customers. Whether it's a washer or finger rest, we will take care of it for you.

JW PROFESSIONAL SHEAR SERVICE

The JW Signature Shear Service helps maintain the value of your shears investment. With as much as you paid for your shears, you want to keep them in pristine condition for as long as possible. That's why we offer the JW Signature Shear Service. It's more than a shear sharpening, it's preventative maintenance to change, inspect, check and clean essential components of your shears to keep them cutting smoothly.

JW Professional Sharpening & Restoration Includes:

- Blade Sharpening
- Tension Adjustment
- Balancing
- Part Inspection
- Cleaning
- Hand Honing
- Polishing
- Quality Control Testing and Dis/Reassemble

Replacement of Finger Rest or Tang, Finger Rings, Washers, and Bumper if needed on JW Brand Shears.

For faster and more enhanced service options like on-line tracking we strongly suggest you request your JW Signature Shear Service on-line at JWShears.com. Simply visit us on-line and choose your desired shear service and follow the instructions. It's that simple!

Standard Service (\$45): 10 working days from receipt of your shears by our Authorized Service Center.

Express Service (\$60): 4 working days from receipt of your shears by our Authorized Service Center.

Left without a shear while you service yours? **We'll provide you a free service shear loaner!** The best part is you get to keep loaner shear once your shears have been serviced.





A digital version of this catalog is available for view, print
and / or save at **JWShears.com**



@JW_Shears
#JWShears

Cobalt Group Inc. 9301 Jordan Ave. Suite 105 Chatsworth, CA 91311
Tel. (818) 998-9199 or (800) 228-9739 | Fax (818) 998-9268 | www.JWShears.com

All illustrations, photographs, and specifications in this publication are based on the latest product information available at the time of printing. Cobalt Group Inc. reserves the right to make changes at any time, without prior notice, in prices, colors, models, and to discontinue models. For additional information on availability, contact your authorized JW dealer. JW, the JW logo and JW Model Name(s), Briskee, Craft and K5 are Cobalt Group Inc. trademarks. © 2020 Cobalt Group Inc.

 In an effort to minimize the environmental impact of this brochure Cobalt Group Inc. uses a recycled coated paper. Printed in USA 100K MC-01-2020